



Załącznik do protokołu odbioru z dnia 01.02.2016r - oddanie
kuchni sz. w obecnym pomieszczeniu URN Nurzec - Stacja 1/8. Protokół i K. P. (R. n. l.)

URZĄD GMINY
Nurzec - Stacja
17-330 Nurzec-Stacja
ul. Zerczycka 33

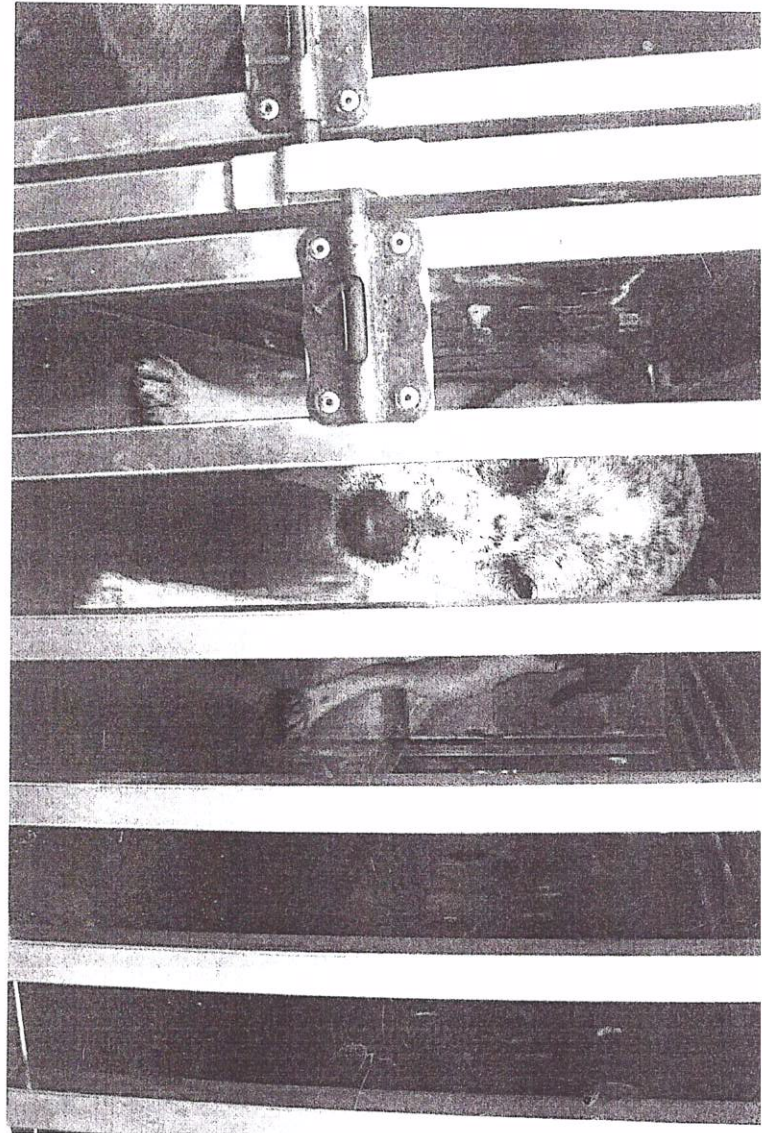
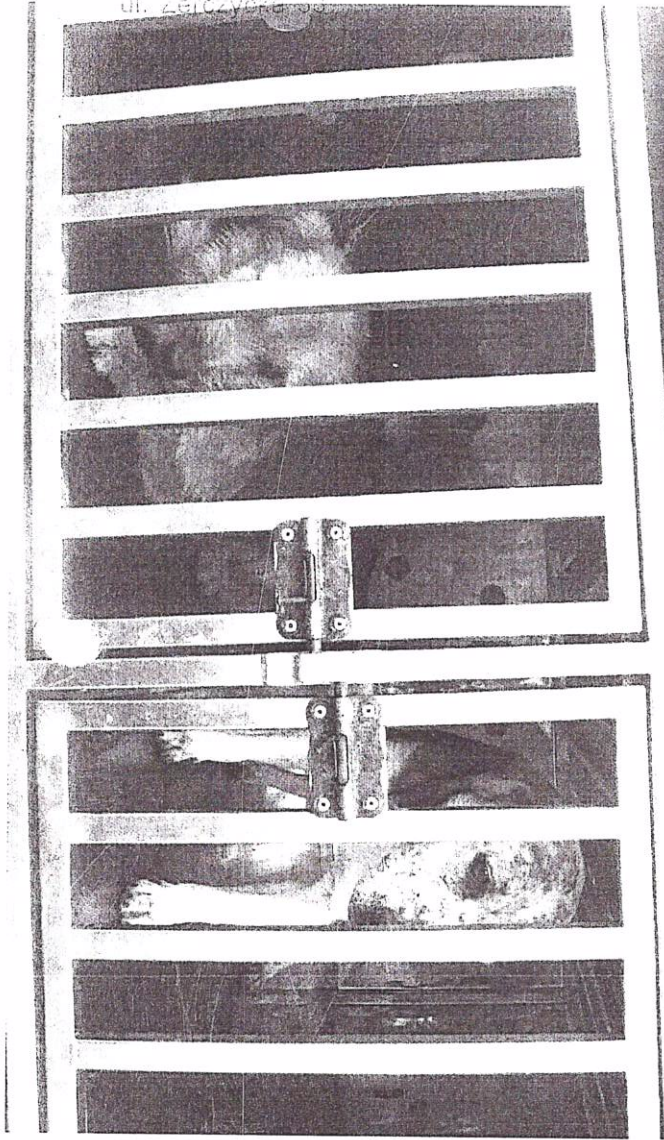
KRG 6440.10.2016



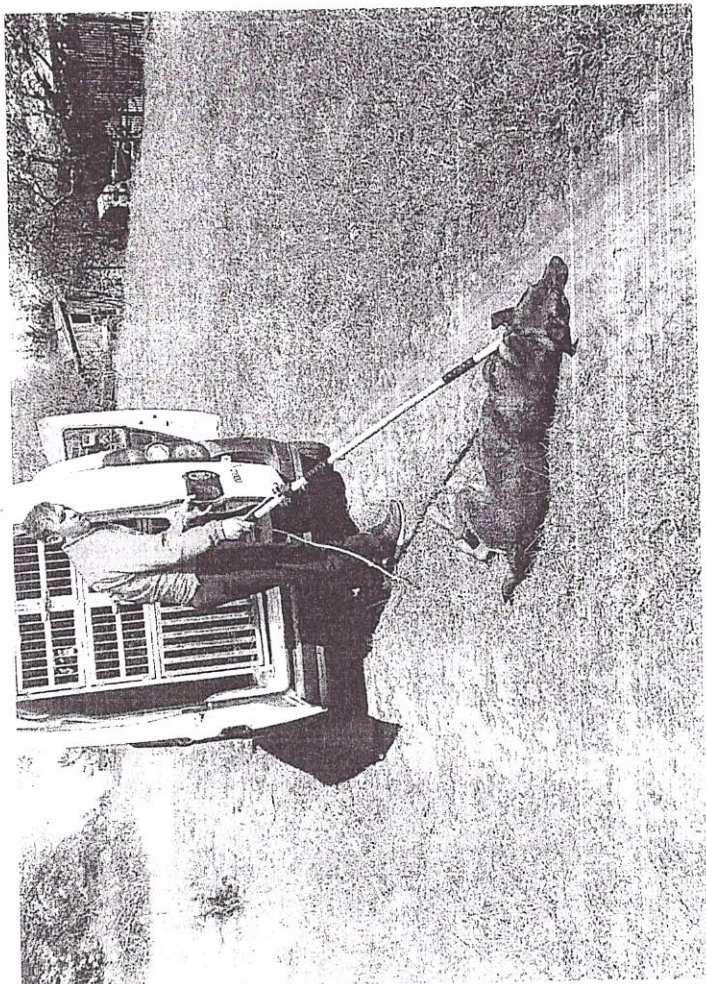
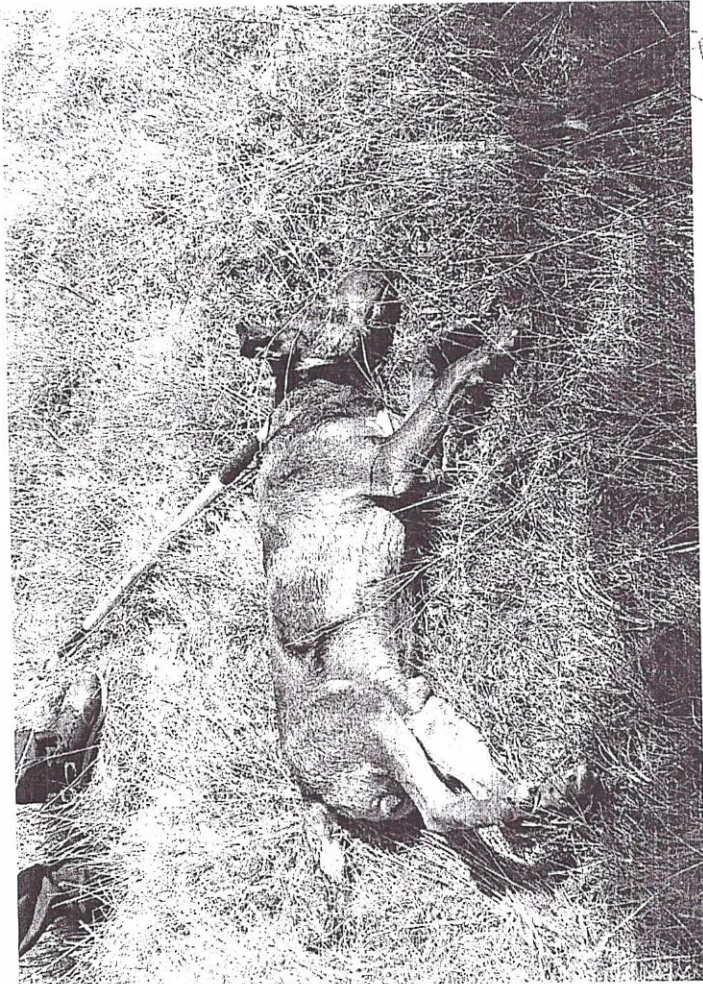
7

11.01.2016
ul. Zerzyńska 33

28.01.2016



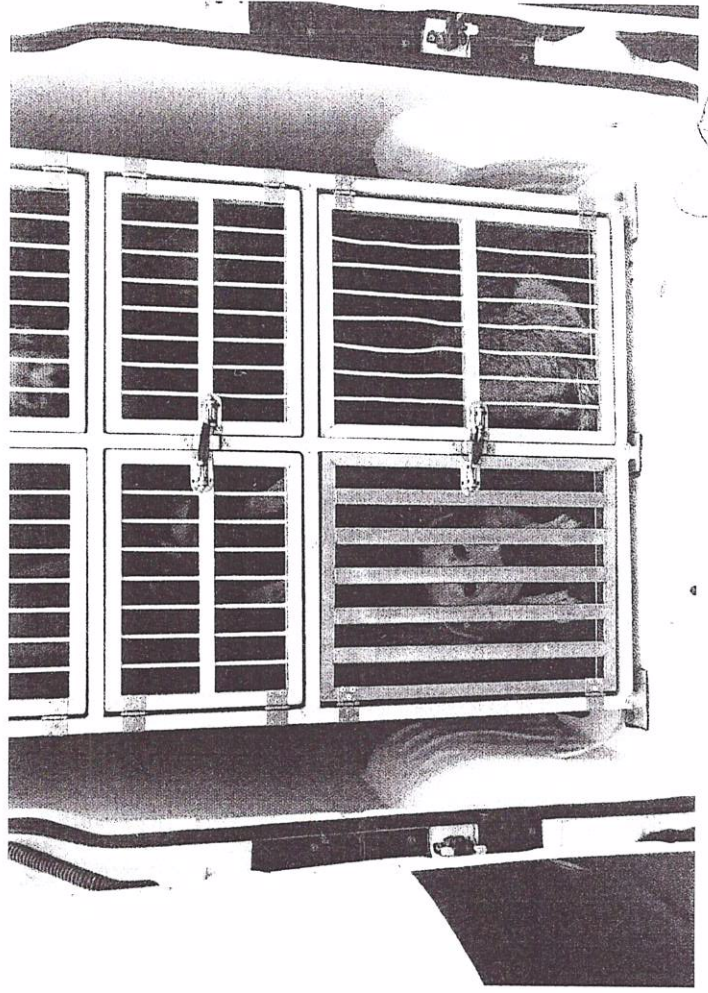
Maxim Sychowski



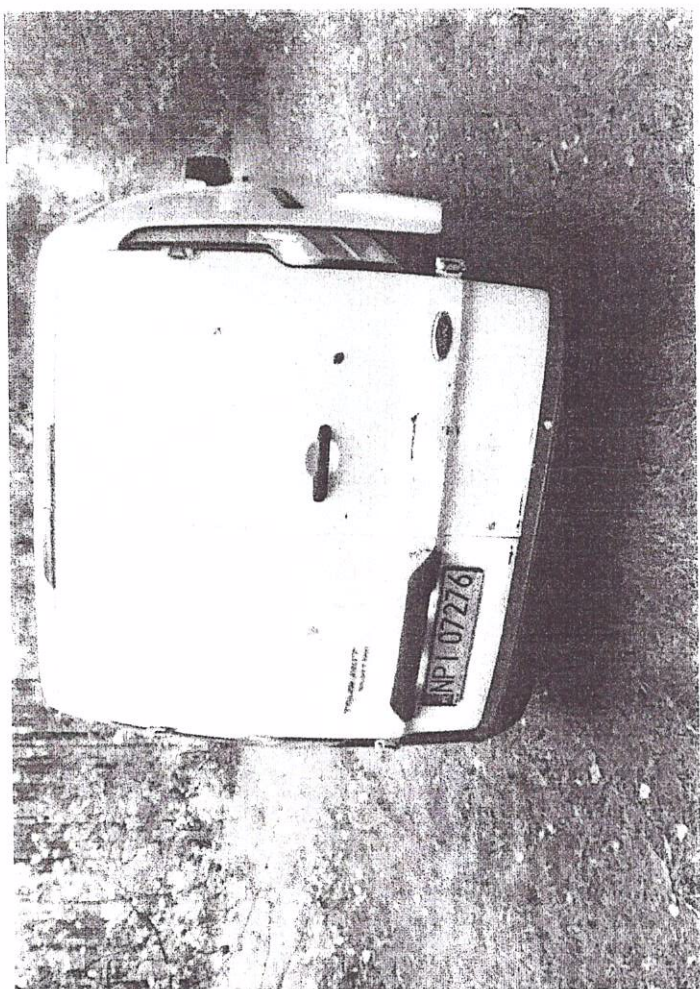
PRE C1400 2005

RRR 6/10/13/MS

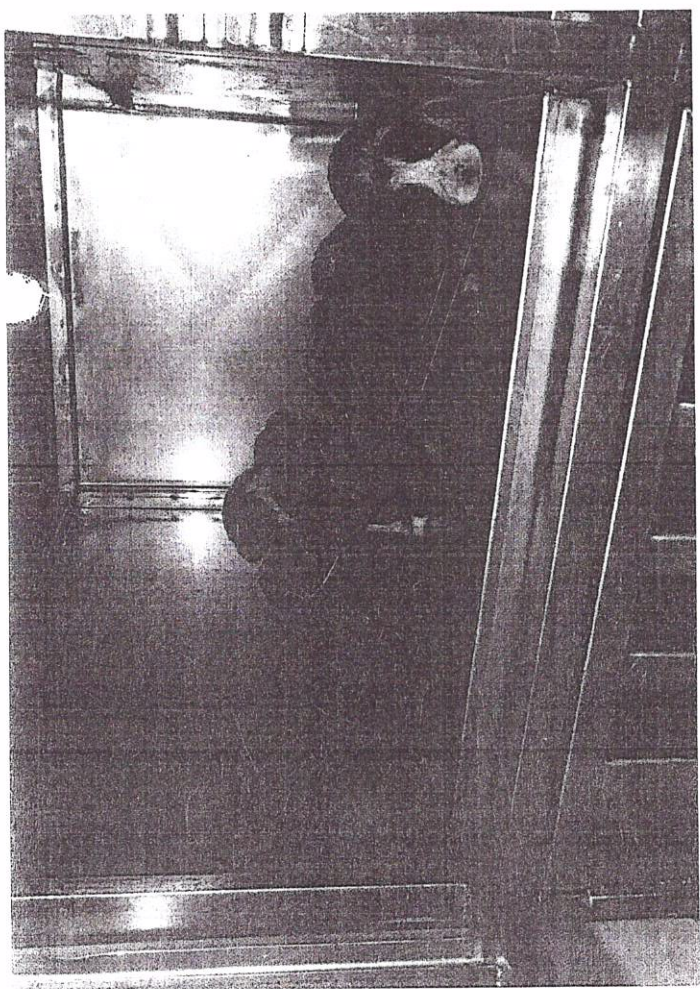
Leipziger Str. 13, 01109 Berlin
2. August 2013, 15:50



Forensic Photo
Vehicle in question
N 7 P 220 6000000000

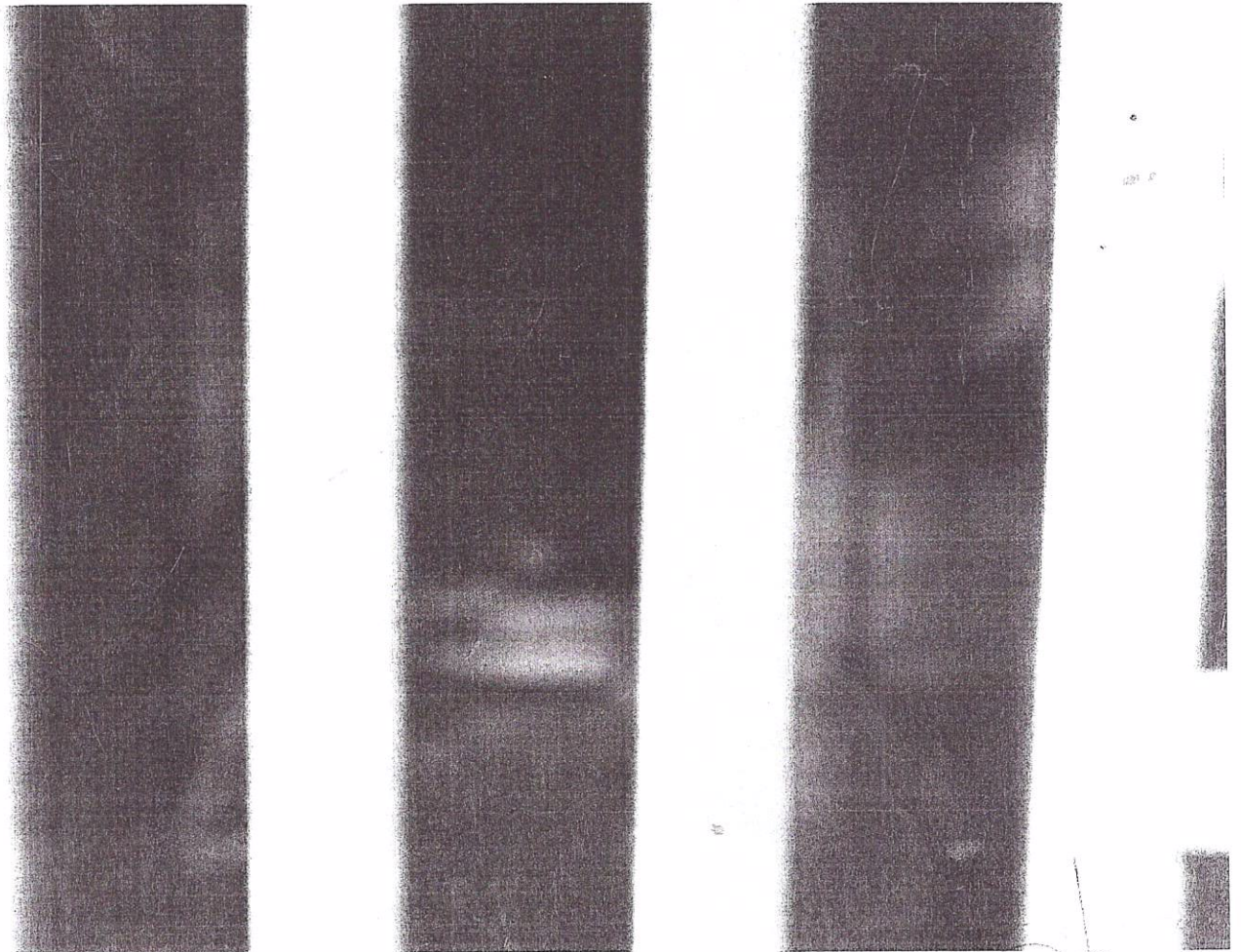


88



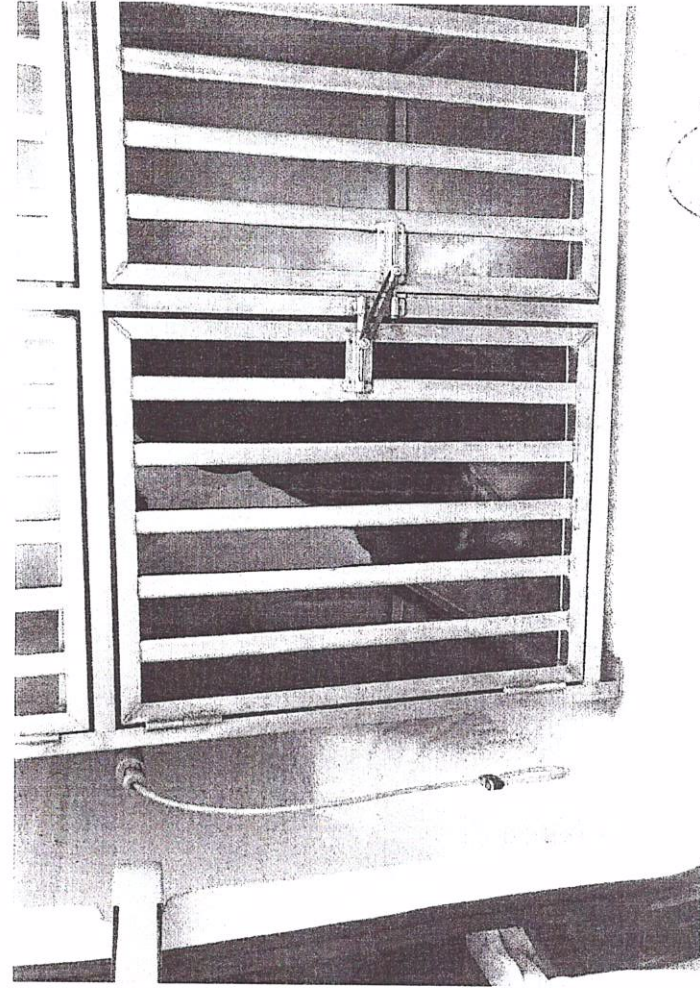
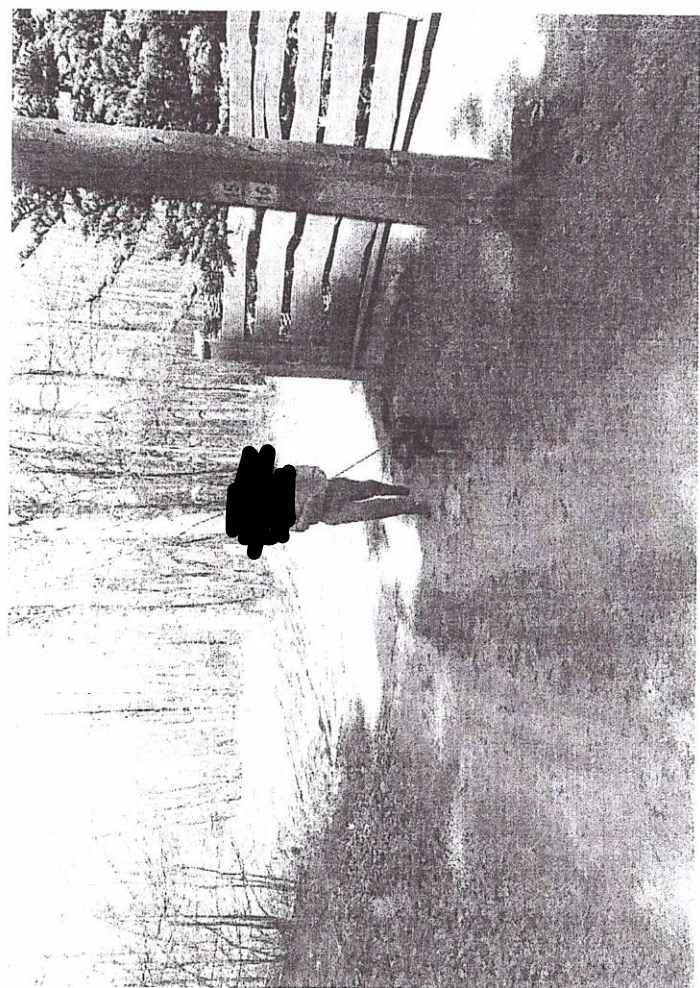
ul. Kolejowa dn. 19.04.2019.

RRG. 6/405. 2018

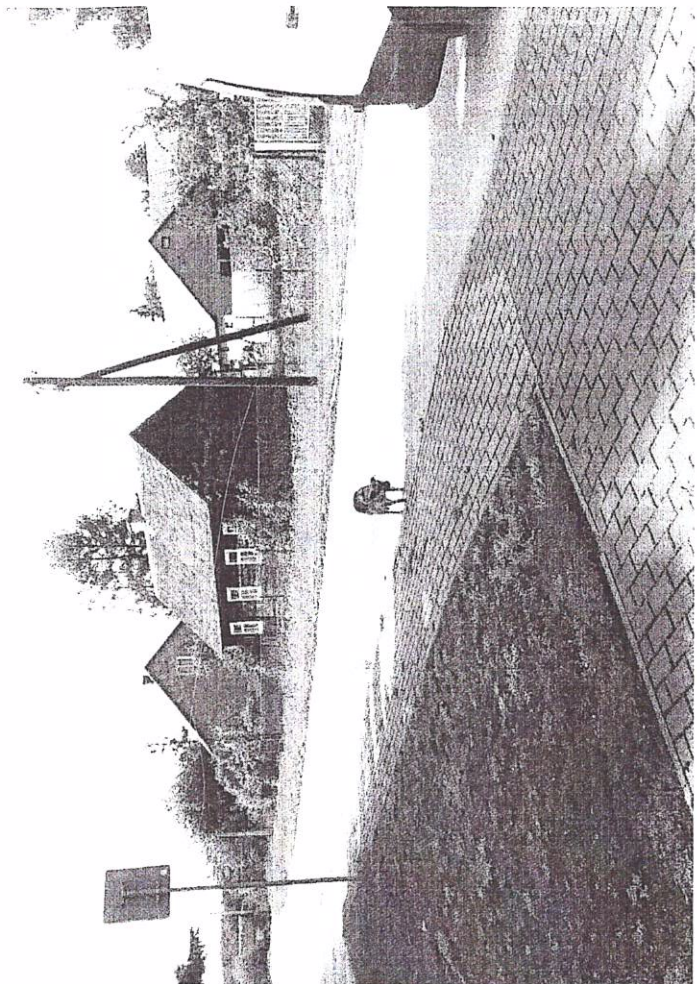
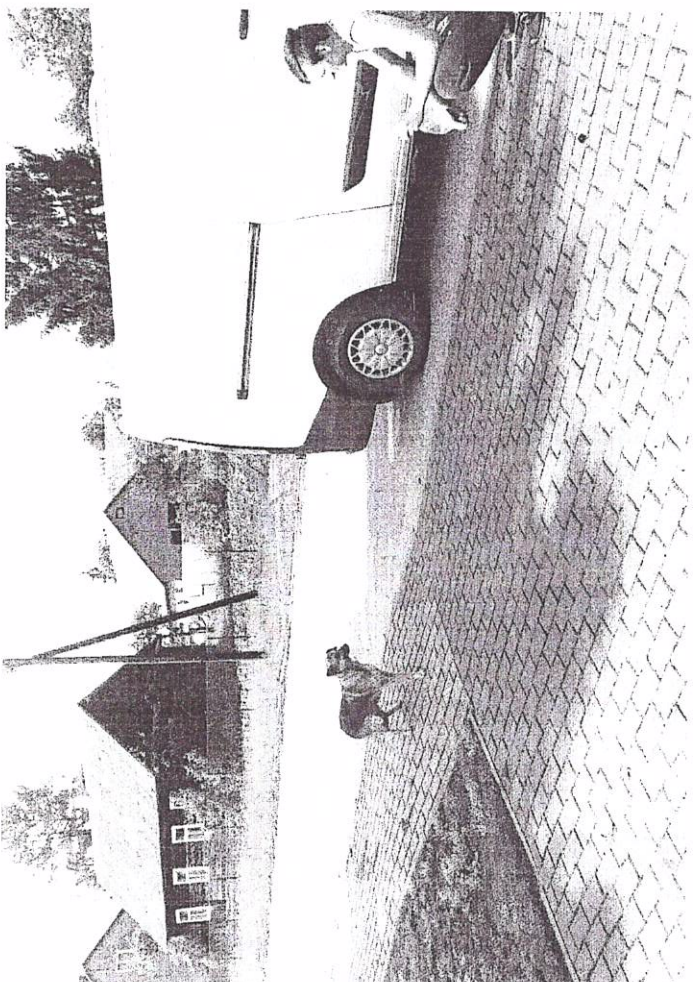


2

ul. Słobomska 20, 17-330 Nurew-Słobys
Otworzył P. Jasiński (wyjątkowo) - zorientowany
PRG 6140.5. 2019



OK



Wzrost: 100cm

Nurzec Stacja
330 Nurzec Stacja
ul. Zerzyńca 3B

